

7D
6N

枫漫本州

MOMIJI HONSHU

东京 | 富士山 | 京都 | 奈良
TOKYO | MT FUJI | KYOTO | NARA



1 吉隆坡 ✕ 羽田

集合于吉隆坡国际机场，搭乘飞往日本的航班。

📍 抵达羽田机场后，转运至机场酒店休息。

2 羽田 - 25公里 - 东京

📍 仲见世街道

充满下町风情的街区，沿路商店售卖各种小吃与伴手礼，现烤仙贝店、浅草名物人形烧等等。

📍 浅草寺

东京最古老的寺庙，也是必游热门景点。这座寺庙的标志是正门悬挂着的巨大“雷门”大灯笼。

📍 秋叶原

被称为“电器城”，是东京著名的电子产品和动漫文化中心。这里是动漫迷、游戏爱好者和收藏者的天堂。

📍 新宿

吃喝玩乐以及购物天堂，还有不夜城之称的歌舞伎町。

3 东京 - 151公里 - 山梨

📍 筑地场外市场

汇聚餐馆、摊位和商店，提供新鲜海鲜、寿司和刺身，是体验日本传统美食的理想去处。

📍 东京塔（拍照留念）

📍 昭和纪念公园

步道两旁铺满了金黄和火红的落叶，银杏与枫树换上了秋天的华美衣裳。脚下的落叶沙沙作响，每一步都仿佛在诉说着秋天的故事。

📍 山中湖温泉

我们将在最闻名且古老的温泉老区过夜。

4 山梨 - 153公里 - 静岗

📍 大石公园

您可以欣赏到秋季限定的艳红扫帚草，它们轻轻摇曳如海洋般波动，更与红叶及富士山美景遥相辉映。

📍 富士山全景缆车

从高处欣赏下方的湖泊和富士山的全景。

📍 御殿场奥特莱斯

这里拥有多家日本国内外时下最流行，最值得选购的名牌。

5 静岗 - 227公里 - 京都

📍 古典京都

穿梭“二年坂，三年坂”千年日式风情老街，有时候更可以遇见穿梭江户时代身穿和服的日本艺妓。

📍 清水寺

京都最古老的寺院，也是世界文化遗产。

📍 伏见稻荷神社

这里供奉着保佑五谷丰登和生意兴隆的稻荷大神。神社最著名的景观是“千本鸟居”，由成千上万座朱红色鸟居组成的长廊，通往稻荷山的顶端。

6 京都 - 98公里 - 奈良 - 72公里 - 关西

📍 嵯峨野竹林步道

走在高耸的竹林小道，禅意十足，让您舒缓身心。

📍 心斋桥

大阪最繁华的商业街，最著名的百货商店街、流行时尚街、风味美食街，还有道顿堀都集中在这里。

📍 奈良公园

公园内散养着许多性格温顺的鹿，您可以购买饲料喂它们，或是轻轻抚摸它，尽情享受与其互动的乐趣。

📍 奈良东大寺

此佛教寺庙内供奉着世界上最大的青铜佛像，高约15米，也是世界文化遗产。

7 关西 ✕ 吉隆坡

今天，我们将乘搭当日班机返回家园。

※ 行程可能会以最终确定的航班而前后调动。



大石公园 / Kawauchiko Oishi Park



昭和纪念公园
Showa Memorial Park

1 KUALA LUMPUR ✈ HANEDA

Assemble at Kuala Lumpur International Airport for departure flight to Japan.

📍 **Transfer to hotel for rest upon arrival at Haneda airport.**

2 HANEDA – 25km – TOKYO

📍 **Nakamise Street**

A neighborhood full of Shitamachi-style, shops along the road sell a variety of snacks and souvenirs, such as freshly grilled senbei shops and Asakusa's famous Ningyoyaki and more.

📍 **Asakusa Temple**

Oldest Buddhist temple and a must-visit in Tokyo. The hallmark of this temple is the huge red lantern with a thunder gate carved on it.

📍 **Akihabara**

Known as "Electric Town," Akihabara is a famous center for electronics and anime culture in Tokyo. It is a paradise for anime fans, gamers, and collectors.

📍 **Shinjuku**

There's no question that Tokyo is the ultimate shopper's paradise and **Kabuki Cho** is one of the night entertainment hubs.

3 TOKYO – 151km – YAMANASHI

📍 **Tsukiji Market**

The market features restaurants, stalls, and shops offering fresh seafood, sushi, and sashimi, making it an ideal place to experience traditional Japanese cuisine.

📍 **Tokyo Tower (Photo Shop)**

📍 **Showa Memorial Park** 🌸

The path is lined with golden and fiery red fallen leaves, while the ginkgo and maple trees wear their splendid autumn attire. The leaves crunch softly underfoot, each step seeming to tell the story of autumn.

📍 **Yamanakako Onsen**

Overnight in the most famous and oldest onsen hot spring in Shizuoka Prefecture.

4 YAMANASHI – 153km – SHIZUOKA

📍 **Kawaguchiko Oishi Park**

You can enjoy the vibrant red broom grass, gently swaying like an ocean, beautifully complementing the red leaves and the distant view of Mount Fuji.

📍 **Mount Fuji Panoramic Ropeway**

Enjoy panoramic views of the lake and Mount Fuji below from up high.

📍 **Gotemba Premium Outlets**

Besides international brand, you can find local Japanese brand as well. From time to time, there will be added value promotion.

5 SHIZUOKA – 227km – KYOTO

📍 **Classical Kyoto**

Walk along "Ninenzaka", "Sannenzaka" a typical Japanese souvenir street where you might spot Geisha walking around the street.

📍 **Kiyomizu-dera Temple** 🌸

One of the most celebrated temples in Japan and is listed in the UNESCO World Heritage Site.

📍 **Fushimi Inari Shrine**

The most famous feature of the shrine is the "Thousand Torii", a corridor composed of thousands of vermilion Torii gates leading to the top of Inari Mountain.

6 KYOTO – 98km – NARA – 72km – KANSAI

📍 **Arashiyama Bamboo Grove**

Stroll through the natural scenery and enjoy its fresh air.

📍 **Shinsaibashi**

Shop at Osaka's busiest and largest shopping area, department store, fashion street, local snacks and **Dotonbori** are all here.

📍 **Nara Park** 🌸

There are many gentle deer roaming around in the park. You can buy feed to offer them, or gently stroke them and enjoy the fun of interacting with them.

📍 **Nara Todaiji Temple**

This Buddhist temple houses the world's largest bronze Buddha statue, which is about 15 meters high and is also a world cultural heritage.

7 KANSAI ✈ KUALA LUMPUR

Proceed to airport for your flight back home.

※ Sequence of the itinerary is subject to change according to the final flight confirmation.





行程亮点 HIGHLIGHT

- 温泉体验
- 仲见世街道
- 浅草寺
- 秋叶原
- 新宿
- 筑地市场
- 东京塔
- 昭和纪念公园
- 大石公园

- 富士山全景缆车
- 御殿场奥特莱斯
- 清水寺
- 伏见稻荷神社
- 嵯峨野竹林步道
- 心斋桥
- 奈良公园
- 奈良东大寺

- Onsen Experience
- Nakamise Street
- Asakusa Temple
- Akihabara
- Shinjuku
- Tsukiji Market
- Tokyo Tower
- Showa Memorial Park
- Kawaguchiko Oishi Park

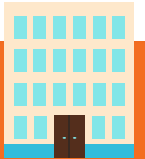
- Mount Fuji Panoramic Ropeway
- Gotemba Premium Outlets
- Kiyomizu Temple
- Fushimi Inari Shrine
- Arashiyama Bamboo Grove
- Shinsaibashi
- Nara Park
- Nara Todaiji Temple



美食 GOURMET

涮涮锅 / 烧烤自助餐 / 酒店自助餐或套餐

Shabu-Shabu / BBQ Buffet / Hotel Buffet or Set Menu



酒店 HOTEL

			早餐 Breakfast	午餐 Lunch	晚餐 Dinner
D1	机场酒店 (1晚) Airport Hotel (1 Night)	羽田日航都市酒店或同等级 Hotel JAL City Haneda Tokyo or similar	-	-	机上用餐 Meal on Board
D2	东京 (1晚) Tokyo (1 Night)	The B浅草酒店或同等级 Hotel The B Asakusa or similar	酒店 Hotel	✓	X
D3	山中湖温泉 (1晚) Yamanakako Onsen (1 Night)	富士美华酒店或同等级 Fuji Mihana Resort or similar	酒店 Hotel	✓	✓
D4	滨松 (1晚) Hamamatsu (1 Night)	滨松协和酒店或同等级 Hotel Concorde Hamamatsu or similar	酒店 Hotel	✓	✓
D5	京都 (1晚) Kyoto (1 Night)	京都东寺舒适酒店或同等级 Comfort Hotel ERA Kyoto Toji or similar	酒店 Hotel	✓	X
D6	机场酒店 (1晚) Airport Hotel (1 Night)	星际之门关西机场酒店或同等级 Star Gate Hotel Kansai Airport or similar	酒店 Hotel	✓	✓
D7	-	-	酒店 Hotel	机上用餐 Meal on Board	-



嵯峨野竹林步道
Arashiyama Bamboo Grove



御殿场奥特莱斯
Gotemba Premium Outlets



伏见稻荷神社
Fushimi Inari Shrine

旅行必备:

护照或签证 - 团员有责任确保护照有效期需至少6个月(从返程日期算起), 并且取得必要的签证和准证。
旅游保险 - 出发前, 建议您购买全面的旅游保险。

条款:

1. 行程、膳食、酒店住宿、交通和自费项目可能会有所更动, 恕不另行通知。
2. 若出现无法预测的特殊情况特别是在旅游旺季期间, UVSB将保留更改或取消行程的权利。
3. 若UVSB的宣传手册或任何传播媒介, 出现任何形式的印刷失误或遗漏, 本公司一概不负责, 并且保留更正的权利。
4. 每位参与UVSB团的成员, 必须为自身安全或行为负责。若出现无法预测的特殊情况 (例如: 交通延误/取消、疾病、天气、示威、战争等等), 因而引发额外支出的问题, UVSB一概不负责, 旅客需自行负责额外的费用。
5. 详情条款, 请参阅单张背面或浏览 <https://ubingo.my/home/terms.php>
6. 以上图片仅供参考, 请以实物为准。

备注: UVSB为UbinGO Vacations Sdn Bhd.

日本团 - 附加条款:

1. 所有行程以中文讲解为主。若有需要, 将提供简单的英语翻译。
2. 如预订三人间, 提供的额外床垫为滚动式折叠床。
3. 团费仅适用于大马公民, 外国公民则需缴付额外费用。

Travel Essentials:

Passport & Visas - Each tour member is responsible to ensure their passport is valid for at least six (6) months from the return date of the trip and all necessary visas and permits have been acquired.
Travel Insurance - It's essential that you take out comprehensive travel insurance before travel.

Terms & Conditions:

1. Itineraries, meals, hotels, transportation and optional tour are subject to change without prior notice
2. UVSB reserves the right to make changes to or cancel the itinerary at any time due to unforeseen circumstances, especially during peak periods or in the event of a force majeure.
3. UVSB is not responsible for omissions, printing and/or presentation errors in brochures or in any media where such information may be presented; UVSB reserves the right to make corrections as required.
4. Every person participating in UVSB's tours shall travel at his/her own risk. UVSB shall not be held liable to any person for additional expenses that may be incurred due to delays or changes in any transport services, sickness, weather, strikes, war or other causes.
5. For other terms & conditions, refer overleaf of invoice or visit <https://ubingo.my/home/terms.php>
6. All pictures shown are for illustration purpose only.

Note: UVSB refers to UbinGO Vacations Sdn Bhd.

Japan Tours - Additional Terms & Conditions:

1. Tours are conducted in Mandarin, with simple translation in English if required.
2. For booking triple-share rooms please note that additional bed is based on "roll-away" bed.
3. Tour fare quoted is for MALAYSIAN, the non-Malaysian surcharge applied.

Tentative Flight Details - Subject to Change

For Agent Use Only:

Updated Date: **NOV 2024**

UbinGO Vacations Sdn. Bhd.

(Formerly known as Apple Flexi Holiday Sdn. Bhd.)

2nd Floor, Bangunan WSF, 42B & 42-1B, Jalan Sultan Ismail, 50250 Kuala Lumpur, Malaysia.

Reg No. 200501002258 (679304-T) (KPK/LN No. 5187)

03-2779 6899
016-324 4899